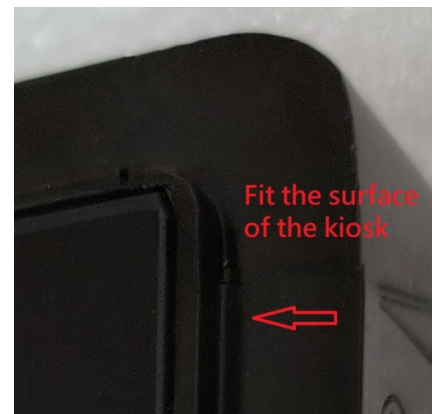
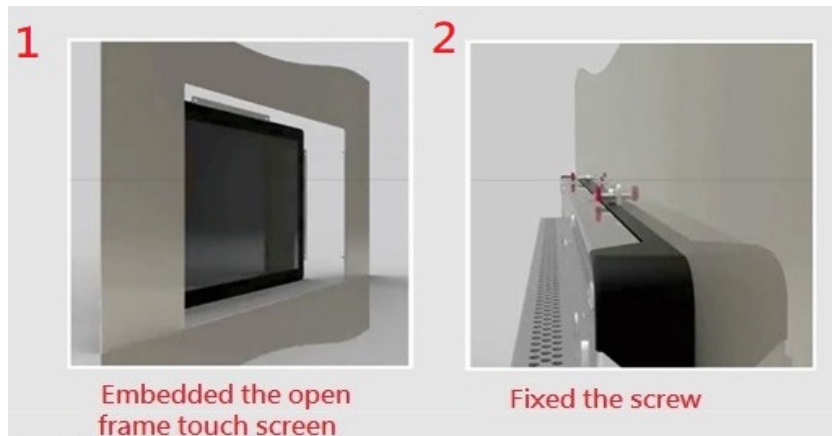


Anker Open Frame Touch Monitor



Model:	AR-T-270C (OF)	AR-T-320C (OF)	AR-T-430C (OF)
Panel size	27"	32"	43"
Estimate active area (W x H mm):	598.5 x 337	699 x 392.8	942.9 x 531.3
Dimension (W x H x D) mm:	653.4 x 391.6 x 55.5	756.1 x 450.7 x 60	1008.1 x 597.3 x 60
Est. Weight:	13kg	18kg	25kg
Power Consumption:	est. 40W	est. 50W	est. 60W
Wall Mount (mm):	75 x 75 / 100 x 100	200 x 200 / 300 x 300	300 x 300 / 400 x 400
Resolution:	1920 * 1080 FHD (16:9)	Response time:	3 - 8 ms
Contrast ratio:	4000:1 or above	Brightness:	350 cd/m ² or above
Speaker:	5W x 2	Viewing angle:	178 /178
IP protection	IP65 (front only)	Wall mount kit:	included
Interface :	HDMI x 1, VGA x1, Touch USB x 1		
Touch parameter:	✓ Touch: 10 points touch ✓ Scanning accuracy: 4096*4096		
Certification:	EN60950 / 61000		



The above pictures and specification are for reference only and subject to change without prior notice